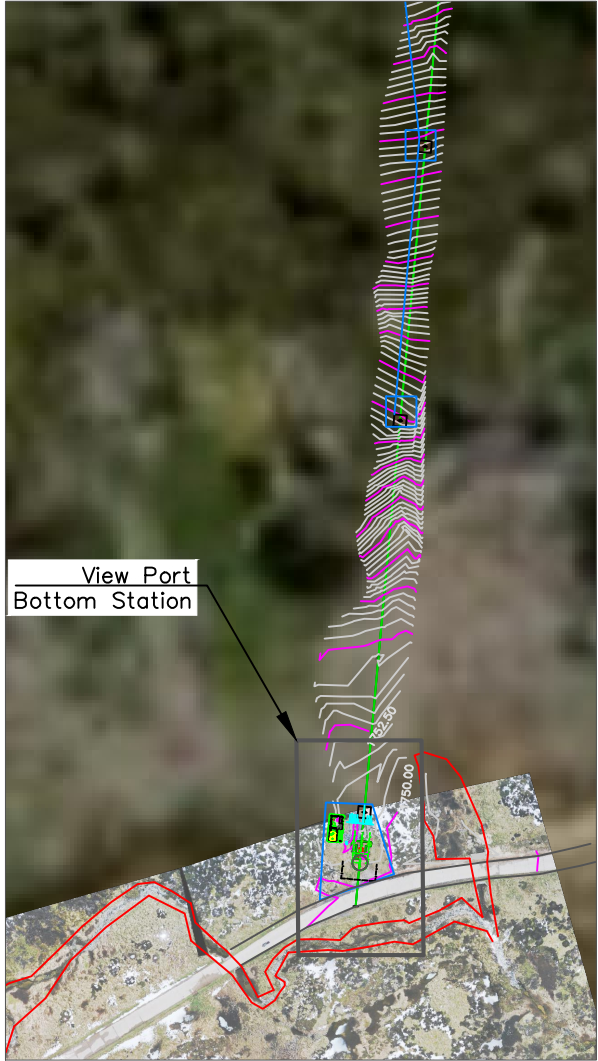



VIEWPORT BOTTOM STATION 1:200



VIEWPORT LAYOUT 1:2000



Department of Planning  
Housing and Infrastructure

*Issued under the Environmental Planning and Assessment Act 1979*

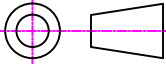

Approved Application No   DA 22/12013

Granted on the    29 February 2024

Signed   D James

Sheet No    52    of    60

SEE REFERENCE DRAWINGS FOR LAYOUTS  
20020469D005001 – LAYOUT BOTTOM STATION  
20020457D001000 – PILZDRIVE FIX GPW 190

Drawing Title:		Drawn: ANDREW		Date: 26.08.2022	Scale: 1:200	Third Angle Projection	
GUTHRIES_LAYOUT_BOTTOM		Checked: SHAUN		Date: 26.08.2022	Material:		
		Approved:		Date:	Finish:		
Project: GUTHRIES		Sub Project: LAYOUT_ACCESS		Project No-Drawing No: 2020-15-C-016		Sheet: of	Revision: B
File: FILENAME				All dimensions in millimeters. DO NOT SCALE. If in doubt ask.			
		Doppelmayr Australia Pty Ltd. 57 Lee Avenue, Leesville Estate Jindabyne NSW 2627 Australia ABN: 12 005 054 133		Phone: +61 2 6456 2385 Fax: +61 2 6456 2736 Web: www.doppelmayr.com Email: info@doppelmayr.com.au		Customer: CHARLOTTE_PASS	
This drawing is the intellectual property of DOPPELMAYR AUSTRALIA Pty Ltd and must not be copied or utilised in whole or in part without permission and is subject to return upon request. Copyright © of DOPPELMAYR AUSTRALIA Pty Ltd. All rights reserved.							A3